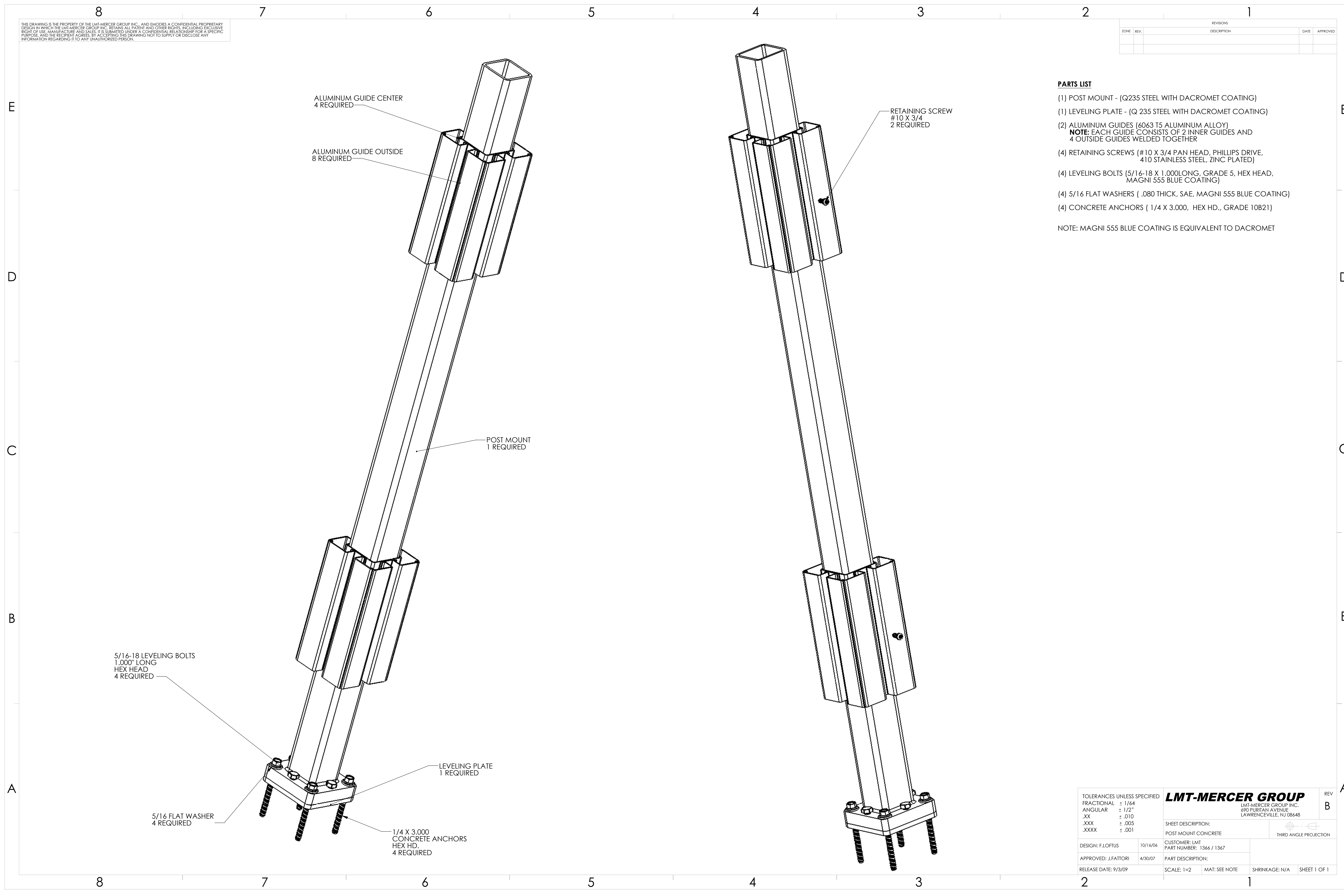


THIS DRAWING IS THE PROPERTY OF THE LMT-MERCER GROUP INC. AND EMODIES A CONFIDENTIAL PROPRIETARY DESIGN IN WHICH THE LMT-MERCER GROUP INC. RETAINS ALL PATENT AND OTHER RIGHTS, INCLUDING EXCLUSIVE RIGHT OF USE, MANUFACTURE AND SALES. IT IS SUBMITTED UNDER A CONFIDENTIAL RELATIONSHIP FOR A SPECIFIC PURPOSE, AND THE RECIPIENT AGREES BY ACCEPTING THIS DRAWING NOT TO SUPPLY OR DISCLOSE ANY INFORMATION REGARDING IT TO ANY UNAUTHORIZED PERSON.

REVISIONS		DATE	APPROVED
ZONE	REV.	DESCRIPTION	



**PARTS LIST**

- (1) POST MOUNT - (Q235 STEEL WITH DACROMET COATING)
- (1) LEVELING PLATE - (Q 235 STEEL WITH DACROMET COATING)
- (2) ALUMINUM GUIDES (6063 T5 ALUMINUM ALLOY)  
**NOTE: EACH GUIDE CONSISTS OF 2 INNER GUIDES AND 4 OUTSIDE GUIDES WELDED TOGETHER**
- (4) RETAINING SCREWS (#10 X 3/4 PAN HEAD, PHILLIPS DRIVE, 410 STAINLESS STEEL, ZINC PLATED)
- (4) LEVELING BOLTS (5/16-18 X 1,000 LONG, GRADE 5, HEX HEAD, MAGNI 555 BLUE COATING)
- (4) 5/16 FLAT WASHERS (.080 THICK, SAE, MAGNI 555 BLUE COATING)
- (4) CONCRETE ANCHORS (1/4 X 3,000, HEX HD., GRADE 10B21)

NOTE: MAGNI 555 BLUE COATING IS EQUIVALENT TO DACROMET

TOLERANCES UNLESS SPECIFIED		<b>LMT-MERCER GROUP</b> LMT-MERCER GROUP INC. 690 PURITAN AVENUE LAWRENCEVILLE, NJ 08648	REV
FRACTIONAL	± 1/64		B
ANGULAR	± 1/2°	SHEET DESCRIPTION:	
.XX	± .010	POST MOUNT CONCRETE	
.XXX	± .005	THIRD ANGLE PROJECTION	
.XXXX	± .001	CUSTOMER: LMT	
		PART NUMBER: 1366 / 1367	
DESIGN: F.LOFIUS	10/16/06	PART DESCRIPTION:	
APPROVED: J.FATTORI	4/30/07	SCALE: 1=2	
RELEASE DATE: 9/3/09		MAT: SEE NOTE	SHRINKAGE: N/A
			SHEET 1 OF 1